



The classic tricot track jacket with pieced stripes and rib knit details.

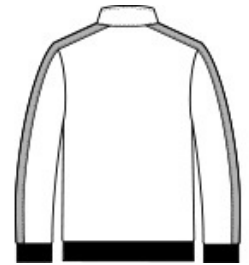
- 100% polyester tricot
- 100% polyester rib knit cuffs and hem
- Soft-brushed backing
- Cadet collar
- Tag-free label
- Reverse coil zipper
- Pieced stripe on shoulders and sleeves
- Front pockets

**CARE INSTRUCTIONS**

Machine wash cold. Gentle cycle with like colors. Use mild detergent, remove immediately. Do not allow to lay on itself when wet. Do not bleach. Tumble dry low. Cool iron, if needed.



front



back

**HOW TO MEASURE**



**CHEST WIDTH**

Measure under the arm and around the fullest part of the chest with arms down, keeping tape horizontal.

**SIZE CHART**

|       | XS    | S     | M     | L     | XL    | 2XL   | 3XL   | 4XL   |
|-------|-------|-------|-------|-------|-------|-------|-------|-------|
| Chest | 32-34 | 35-37 | 38-40 | 41-43 | 44-46 | 47-49 | 50-53 | 54-57 |

**COLOR INFORMATION**

|  |   |   |   |   |
|--|---|---|---|---|
|  |  |  |  |  |
| Black/ Black<br>PMS NTR BLACK<br>C   | Black/ White<br>PMS NTR BLACK<br>C  | Graphite Grey/<br>Black   | True Navy/ White<br>PMS 533C  | True Royal/<br>White<br>PMS 7687C   |